

AIRCARE100AD
Fume Purifying & Filtering System

Instruction manual

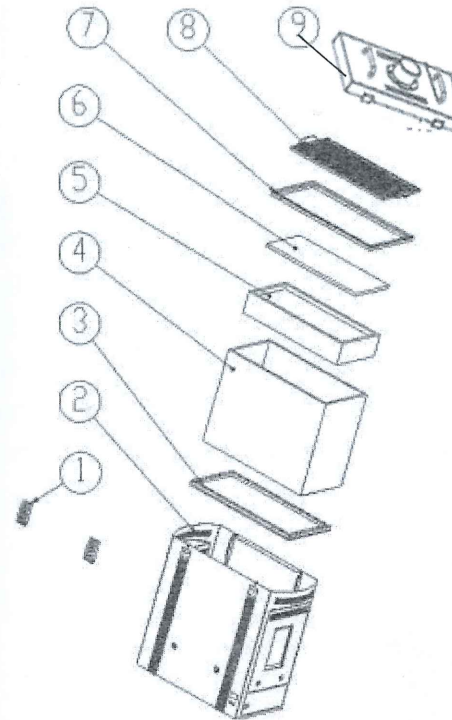
Thank you for purchasing the unit. Please read the manual carefully before operation and after reading it, store this manual in a safe, easily accessible place for future reference.

Content

Announcements.....	1
1.Summary.....	3
2.Characters.....	4
3.Specifications.....	4
4.Operating instructions.....	5
5.Maintenance and replacement of filer.....	10

Announcements

- 1、 Ban use in suction occasion with open fire, in case breaking out of fire.
- 2、 Ban use in suction occasion with hot flake, in case breaking out of fire.
- 3、 The unit must be placed straight up. No slantwise placing or converting the origination for protecting the unit from damage..
- 4、 Upper limit working load can set. After reach to the upper limit working load must clearing zero, otherwise alarm.
- 5、 When change filter, please check if the rubber frame put smooth or not, if not, cause air leakage .
- 6、 When use hasp button, please tamp down head cover, and then fixed the hasp button, otherwise can damage it.
- 7、 This product is not explosion-proof specifications, forbidden for potentially explosive environment.



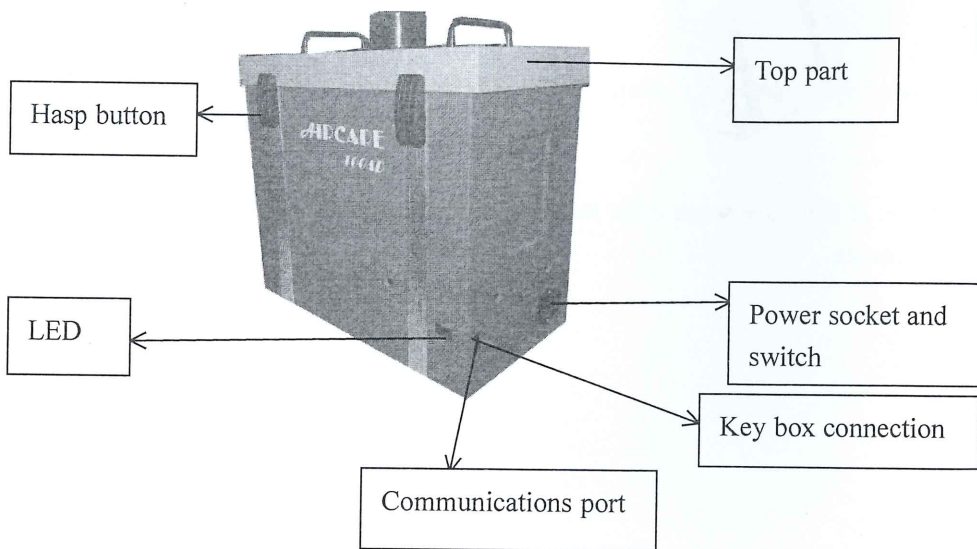
- ①Hasp button
- ②Machine shell
- ③Bottom rubber casing
- ④Chemical filter
- ⑤Middle filter
- ⑥Primary filter
- ⑦Rubber casing
- ⑧Top filter
- ⑨Top part

Note: If there are some other troubles shooting, please contract with our company or agents.

1. Summary

The unit is a Fume Purifying & Filtering System for cleaning of both particles and gases. The unit is double fuming arms design and during the process of soldering, laser marking, laser carving, printing etc. to be used at filtrating the harmful substances, such as hydrocarbon, cyanide etc.

For good efficiency, it designs a Triple-filter system: Primary filter, middle filter and chemical filter which including HEPA (high efficiency) filter and gas filter. The Primary filter with large area and the middle filter can filter the bigger powders for prolonging the chemical filter's life. The HEPA cleans the gas and powders filtering from the Primary filter and then output them to the gas filter, which with the carbon and other chemical combination, filters off the deleterious substance and then outputs the clean air.



2. Characters

1. It is easy to install and not lay pipelines.
2. Triple-filter design. Remove hazardous substances to ensure health. Primary filter and Chemical Filter can be replaced separately for prolonging the filter's life and cutting down the cost.
3. Circulate air filter type, avoid let cool air/heat air indoor to outdoor, save energy really, and fit environmental protection requirement.
4. Increase power DC brushless motor, wind large, with suspension function, extend life.
5. Low noise design.
6. Double fuming arms design, the airflow and arms both are adjustable.
7. the diameter of directional air hose can input, procedure automatic adjustment relevant parameter.

3. Specifications

Voltage:	110V-220V AC
Power:	120W
Qty of Arms:	1
Airflow:	100m ³ /h
System Airflow (Including Filter):	120m ³ /h
Filtering Efficiency (0.3um):	99.97%
Arm Length:	φ75mm×1500mm
Static Pressure:	2400Pa
Noise:	60dB
Size (H×D×W):	420×230×430mm
Weight:	13.4kg

Note: The length of the fuming arm can be ordered.

4. Operating instructions

⚠ Warn:

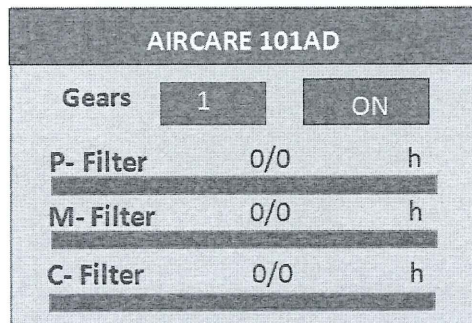
- Do not artificially jams inlet lest cause damage of motor.
- After filter clogging ,please immediately replaced so as not to damage of motor.
- The unit must be placed straight up. No slantwise placing or converting the origination for protecting the unit from damage.

⚠ Note:

- It must press the top part tightly and then fasten the hasp buttons to lock the top. Or else, it may cause damage to the hasp buttons

4.1 ON/OFF

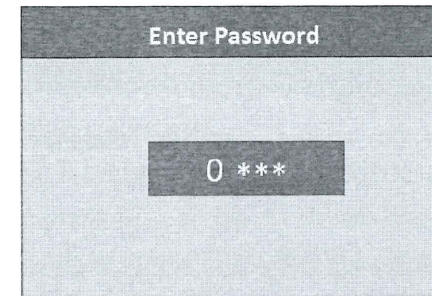
Connect the unit power socket and switch on the power.Press ON/OFF button enter into main interface.Press "△、▽" can select gears,it's ten gears (1-10).The ON/OFF key can control the switch of the gear position



4.2 System parameter setting

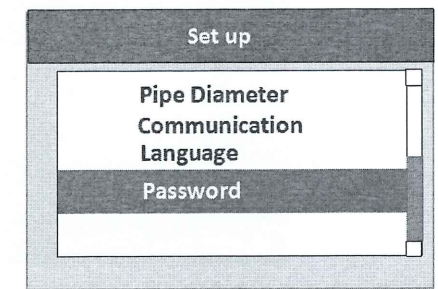
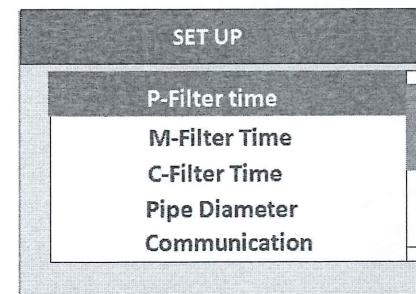
1.Password Input

In the box of unlocked state, long press SYS (about 2 seconds) and enter the password input interface.



2、 Password Setting

After enter the initial password:0000,press SET key to enter system parameter setting page.



In the main interface of the system, press ▽ key to select the password.Press the SET key to input password setting interface,press △、▽、▷、◁ key to change the digital,show****, press SET button to enter the confirm password ,after setting press SET key to confirm .To ensure consistent input password twice, otherwise failure.

Password	
Enter Password	0 ***
Confirm Password	****

Once the password is set, enter the system settings interface to enter the password.

3、P-Filter Time Setting

Press the SET key to enter the Set Up page and select the P-Filter Time, press \triangleright \triangleleft key to change the Limit or Clear, press Δ 、 ∇ key to change the digital (upper limit:999h), press \triangleright \triangleleft key to input Clear and choose YES or ON ,press SET key affirm ,click the BACK to return the Set Up page,click BACK key to return the main interface settings.

P-Filter Time	
Limit:	0 h
Clear:	NO
Used:	0 h

4.M-Filter Time Setting

Press the SET key to enter the Set Up page and press ∇ key to select the M-Filter Time, press \triangleright \triangleleft key to change the Limit or Clear, press Δ 、 ∇ key to change the digital (upper limit:9999h), press \triangleright \triangleleft key to input Clear and choose YES or ON ,press SET to confirm,press the BACK key to return the Set Up page and again click BACK key to return the main interface settings.

M-Filter Time	
Limit:	0 h
Clear:	NO
Used:	0 h

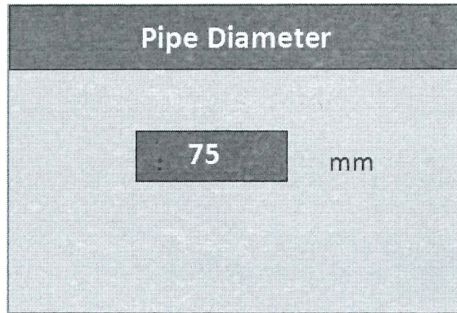
5、C-Filter Time Setting

Press the SET key to enter the Set Up page and press ∇ key to select the C-Filter Time, press \triangleright \triangleleft key to change the Limit or Clear, press Δ 、 ∇ key to change the digital (upper limit:9999h), press \triangleright \triangleleft key to input Clear and choose YES or ON ,press SET to confirm,press the BACK to return the Set Up setting and again click BACK key to return the main interface settings.

C-Filter Time	
Limit:	0 h
Clear:	NO
Used:	0 h

6、Pipe Diameter Setting

Press the SET key to enter the Set Up page and press ∇ key to select the Pipe Diameter, press SET key to input Pipe Diameter System .Press Δ or ∇ key to change the digital and have two digital can select 75 or 25, after select the digital ,press SET key affirm,press BACK key to return the Set Up page and again press BACK key to return the main interface settings.



7. Communication Setting

Press the SET key to enter the Set Up page ,press ▽ key to choose Communication and press SET key to input the interface of system communication setting,press ▽ / △ key to change the address and have ninety-nine digital can select 01 to 99;press ▷ ◁ key to input Baudrate ,press ▽ / △ key to change the baud rate(9600\19200\38400\115200).Press SET key affirm,press BACK key to return the Set Up page and again press BACK key to return the main interface settings.



Note:Factory settings by default Address 01,Baud rate 38400

8. Language setting

Press the SET key to enter the Set Up page ,press ▽ key to choose Language and press SET key to input interface of system language setting,press ▽ / △ key to select the language(English).Press SET key affirm,press BACK key to return the Set Up page and again press BACK key to return the main interface settings.



9. Lock screen

Hold the box for a period of time not to operate,the screen will automatically locked. In the locked screen,press SYS key to unlock.

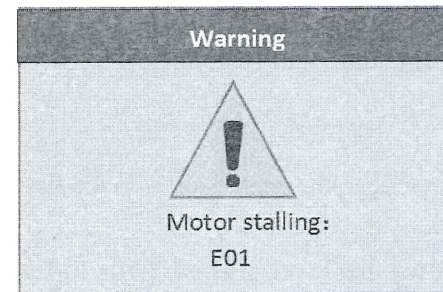
5. Maintenance and replacement of filer

5.1 Warning

When the motor alarms,the holding box displays related alarm information, and suggests the corresponding operation.

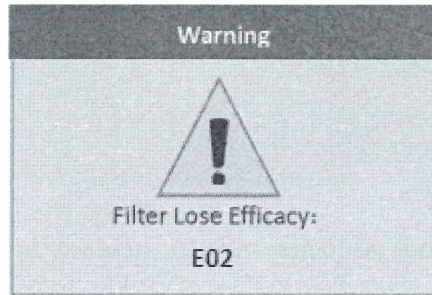
1、 Motor stalling "E01"

Turn off power switch,take up the top and check whether the outlet has been block and clean the other thing if necessary .Turn on the power switch and check the unit,if ti is still block and it should contract with our company or agents.



2、 Filter Lose Efficacy "E02"

After the filter has worked up to unlimited work time ,it should change a new filter.



5.2 Parts maintenance and changeable.

- 1、 The fuming arm should be often clean.
- 2、 The Primary filter system should be often changed.
- 3、 When the unit alarms,check the hose (fuming arms)and nozzles,clean if necessary .If the suction is deficient after cleaning ,change the chemical filter.
- 4、 When changing the chemical filter ,turn off the power supply and loose the four knobs on the sides of the unit.Lift the top,primary filter and middle filer straight up and put aside .Pull the chemical filter straight up.
- 5、 Replace a new chemical filter and re-assembled it as the reverse order.Make sure the inlet to the fan fits to the connection in the bottom of the filter and that the new filter has the right side up.

⚠Note:

- When changing the Primary filter, the dense side is to the filter and the other side is to the inlet.
- The rubber cashing must be level placed with top edge of main filter, or else, it cannot air proof and will reduce the suction.